

Version 2017.2 Preview

Our next release features a major enhancement of the eSight Express interface, improving the user experience with a new intuitive and fully responsive design. The new design will make it easier for users to interact and navigate through the Express area from any device, with new features including instantly updating graphs and canvas map navigation to locate sites and meters. Another addition to 2017.2 is the enhancements of ENVI which will include customizable corporate content and additional fuel types and support for KPI's.

eSight version 2017.2 is due for release Spring 2017. *

Express Interface Redesign

eSight is introducing the new redesigned Express Interface for a fully responsive experience that enables users to quickly produce graphs, identify issues, run reports and manually input meter information. As well as this, the redesign will offer smarter searching of meters and templates.

Why you need Express:

- Quickly locate and manage relevant energy data from any device
- Run energy analysis templates on instantly updating graphs
- Identify, react to and acknowledge potential issues with clear indicators

New Responsive Interface

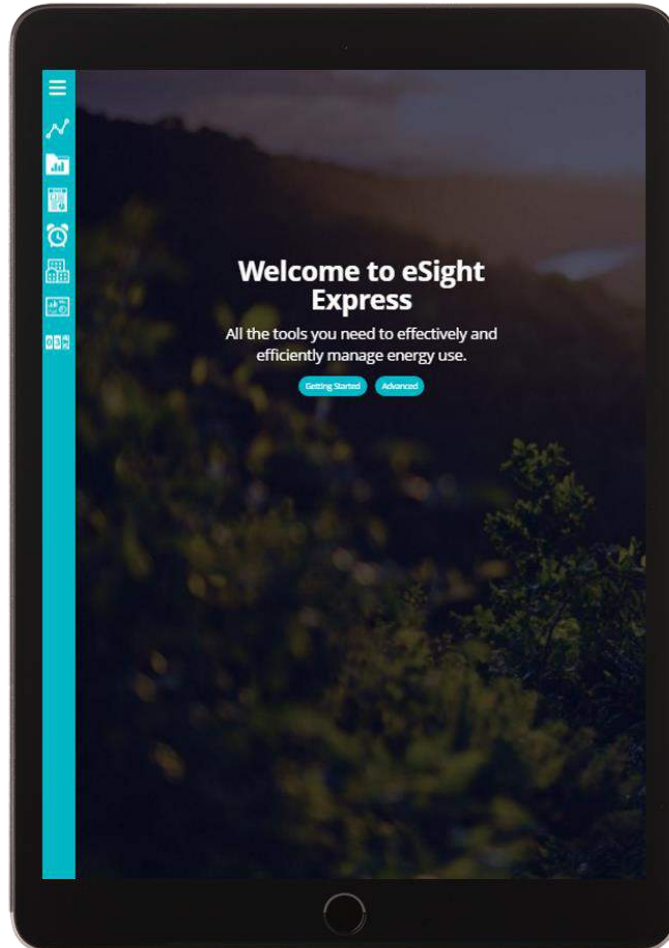
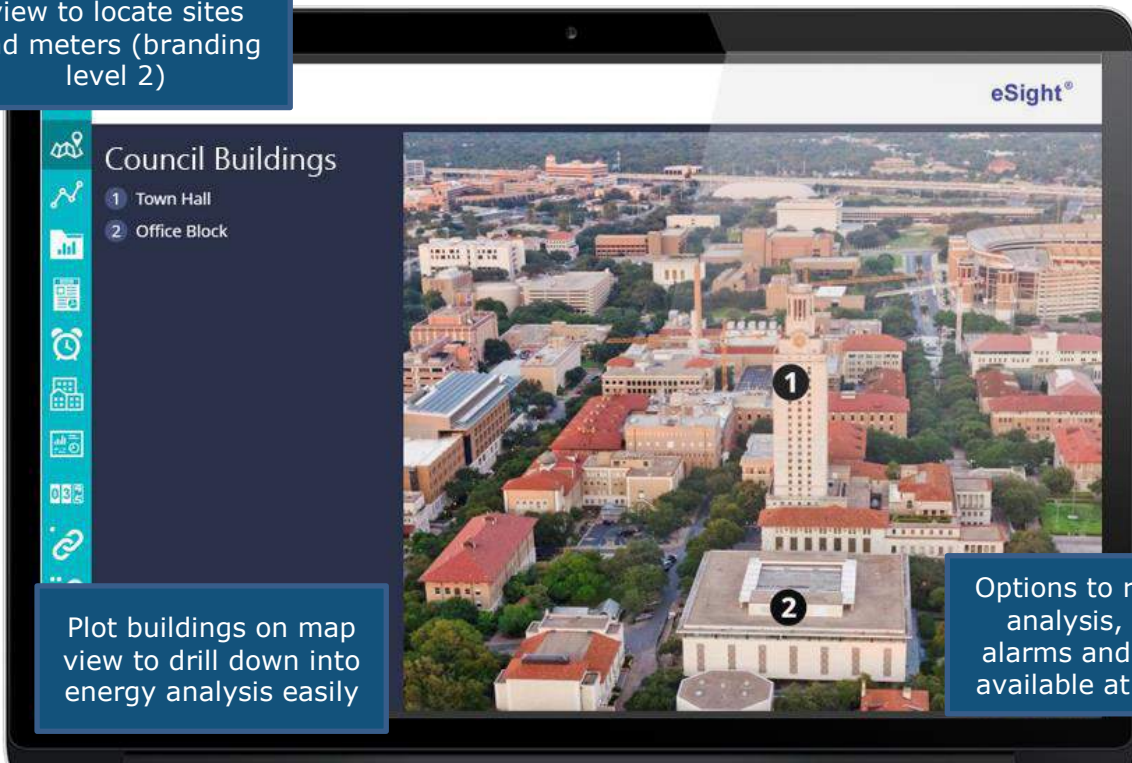


Image on home screen is customizable

Simple icons for easy navigation

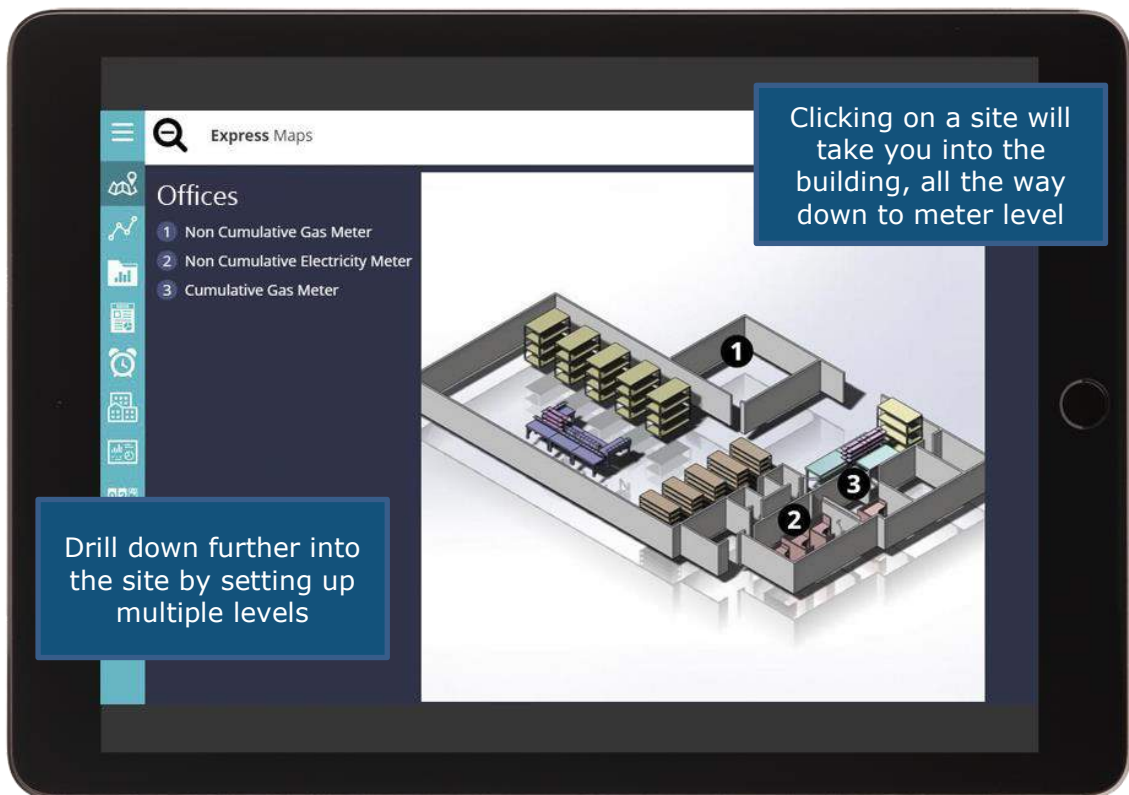
Choose from 3 themes and brand to your corporate style

Select the new Maps view to locate sites and meters (branding level 2)



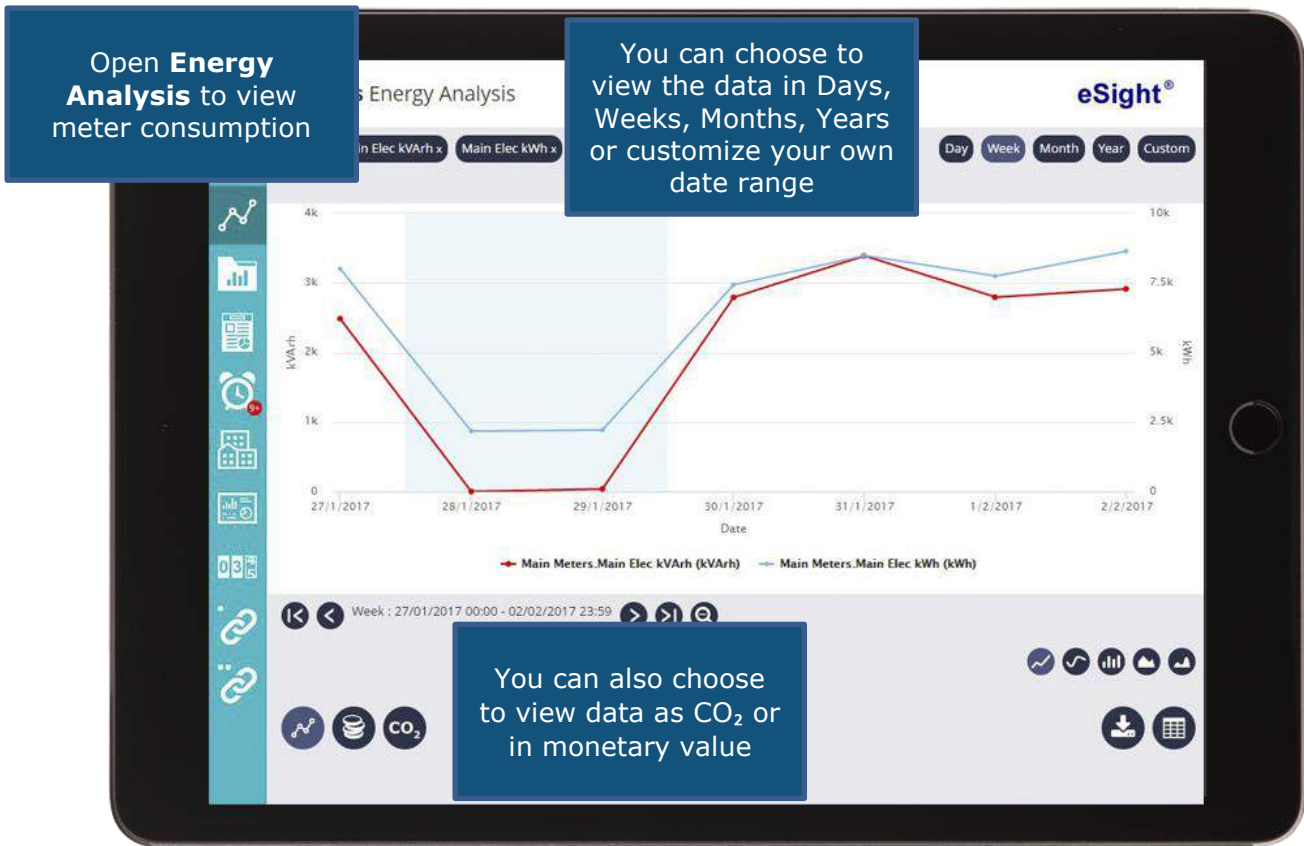
Plot buildings on map view to drill down into energy analysis easily

Options to run energy analysis, reports, alarms and more are available at map view



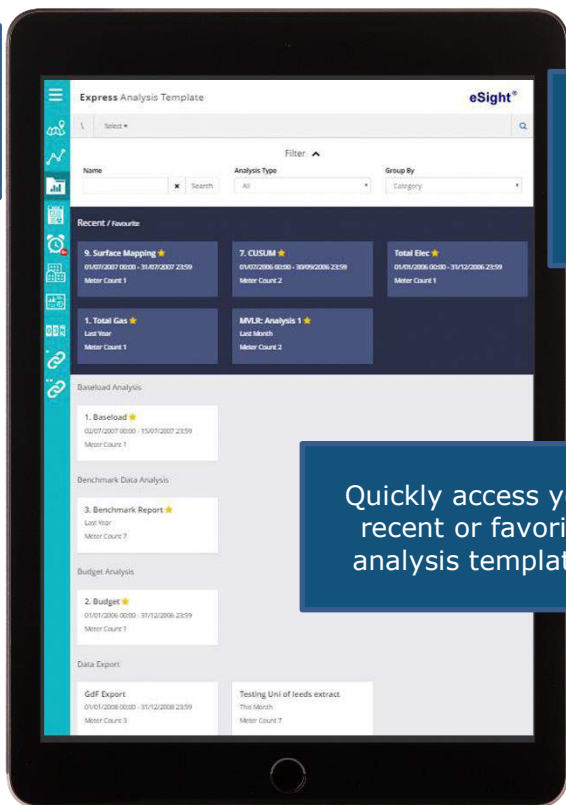
Clicking on a site will take you into the building, all the way down to meter level

Drill down further into the site by setting up multiple levels



New Template & Report Layouts

View and run **Analysis Templates** from a new menu screen



Filter quickly to view "Group By" Category or Path, or Analysis Type

Quickly access your recent or favorite analysis templates

Run **Reports** from a redesigned screen layout

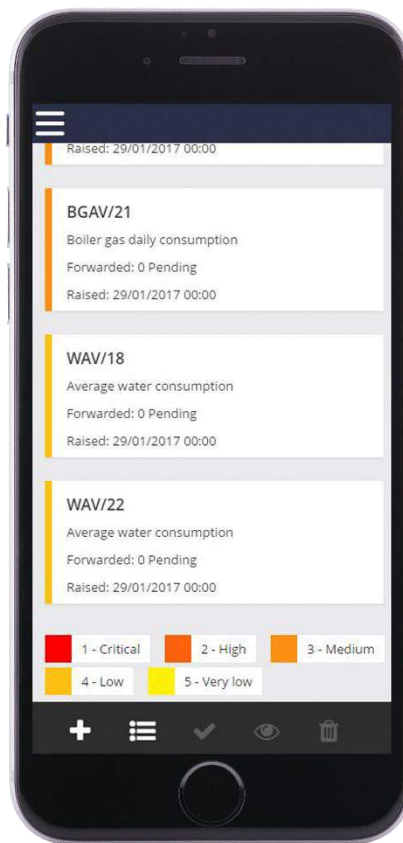
eSight®

Quickly access your most recent reports

Use the task bar at the bottom to add, run or download a report

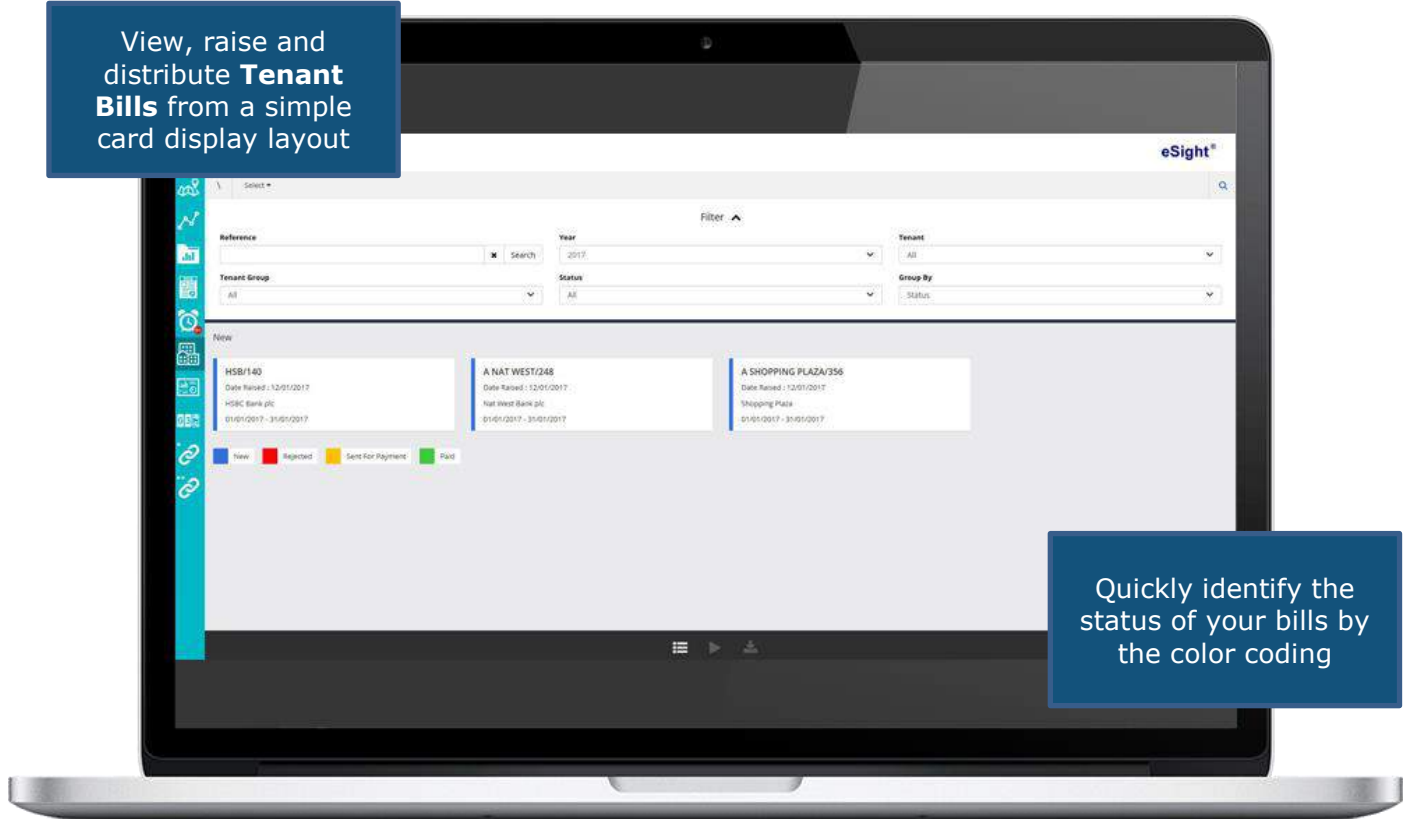
Easily track and acknowledge **Alarms**

View and acknowledge raised alarms easily on any device

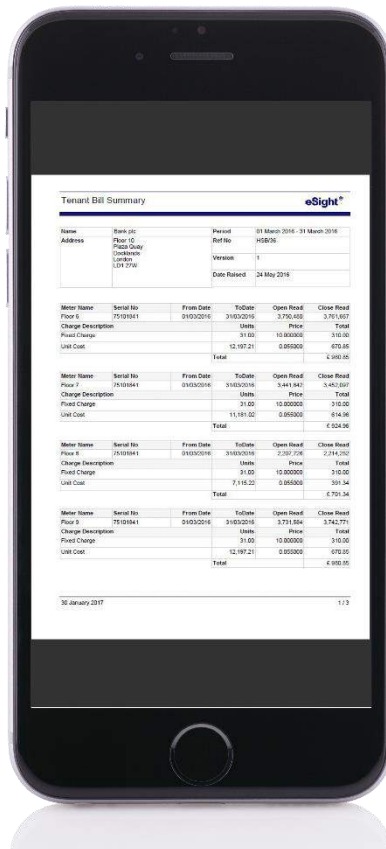


Color coded options make it easy to see the level of alarm importance

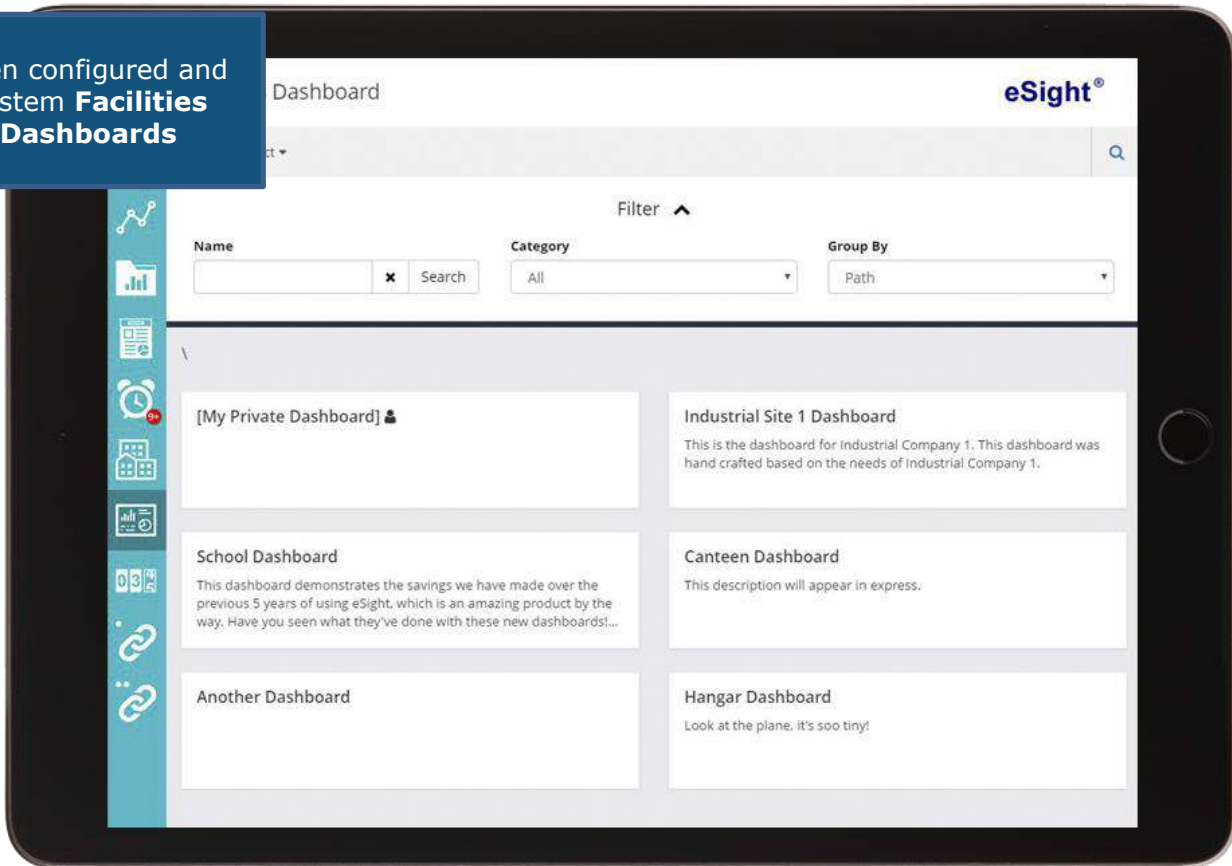
View, raise and distribute **Tenant Bills** from a simple card display layout



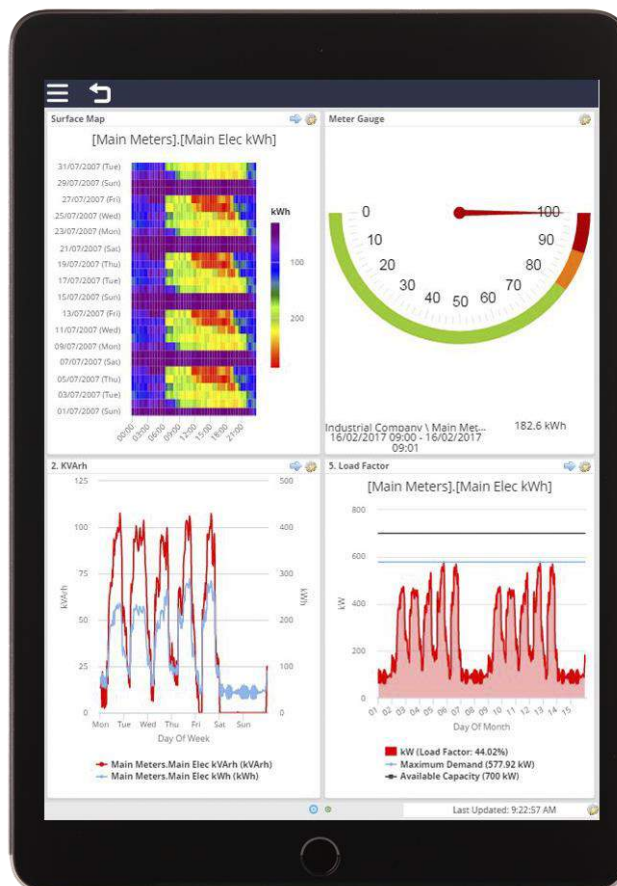
Quickly identify the status of your bills by the color coding



Open configured and system **Facilities Dashboards**



View your Dashboard on any PC, smartphone or tablet

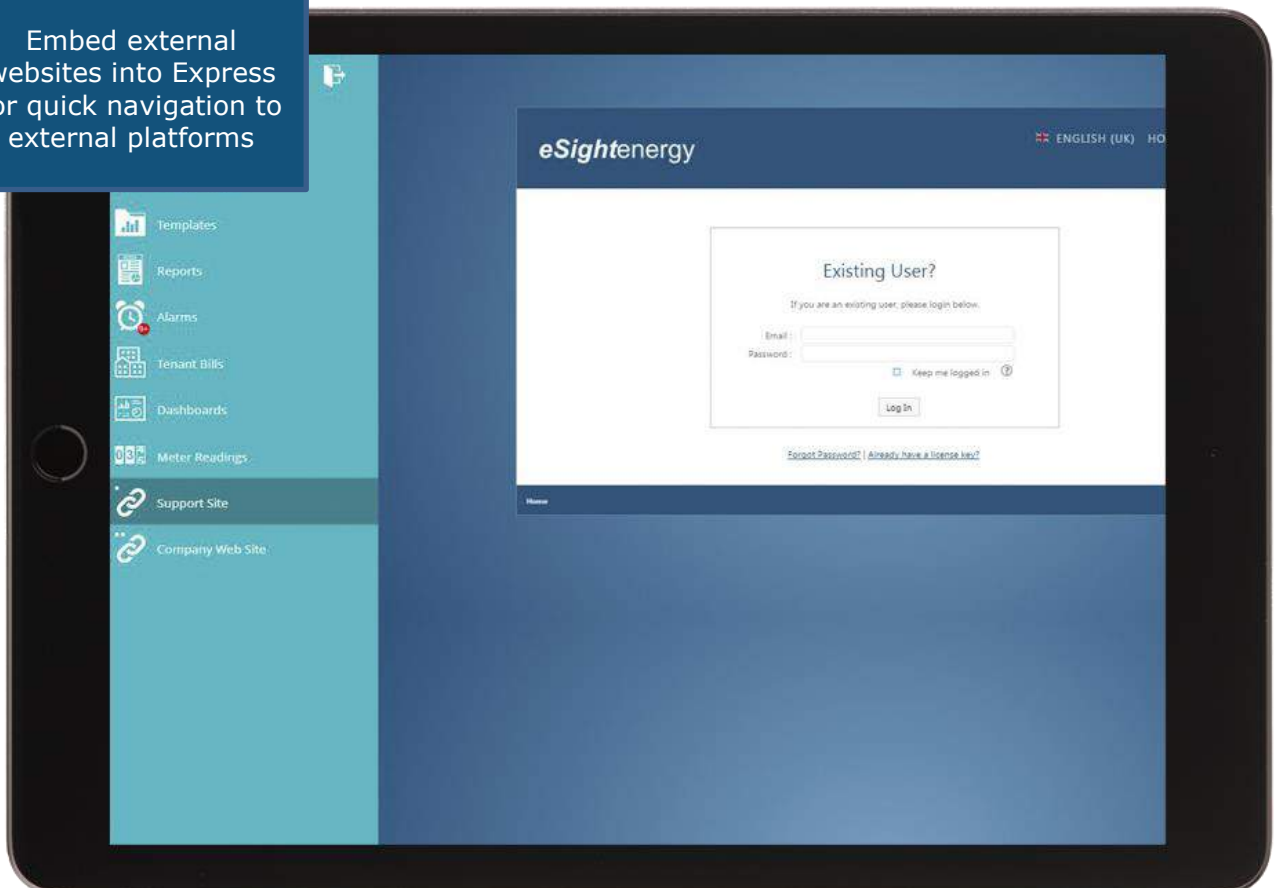


Manually input **Meter Readings** in a simple interface



Follow a pre-defined meter 'Walking Route' for efficiency

Embed external websites into Express for quick navigation to external platforms



ENVI

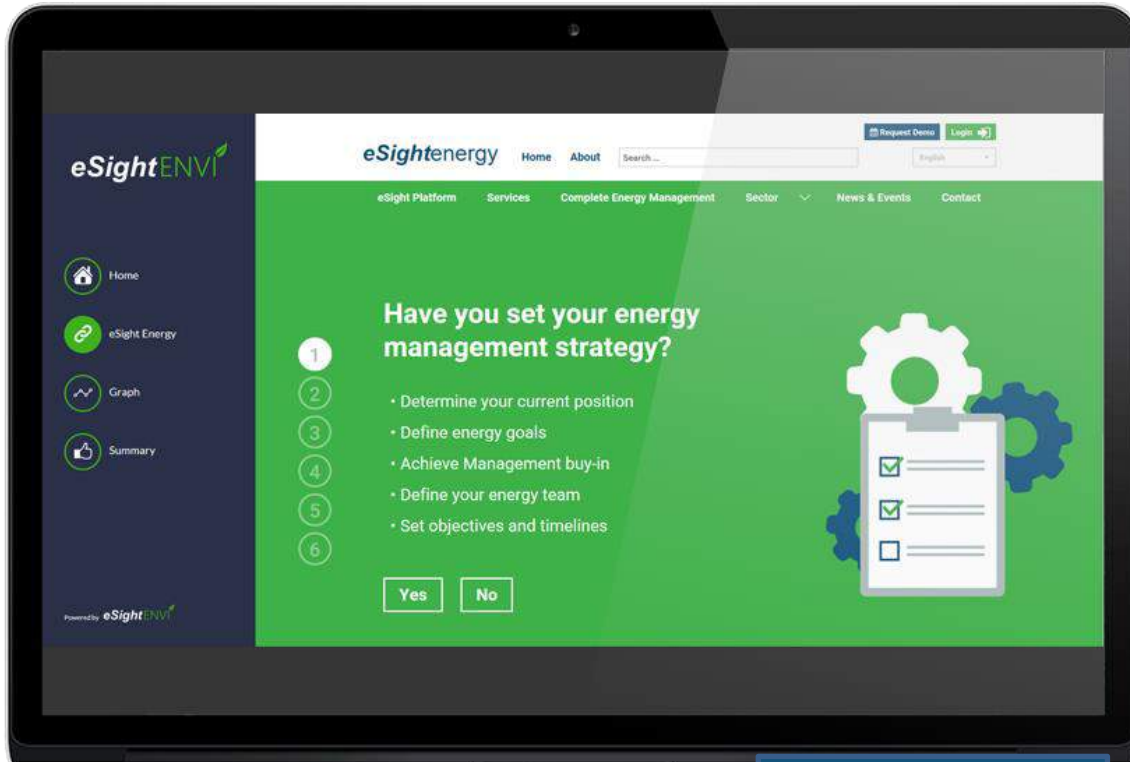
2017.2 sees the release of several key usability updates for ENVI. These were the top requested changes within our customer base and are aimed at ensuring ENVI can be used in a wider variety of applications. These new changes include support for additional unit types, display normalization KPI's, support for energy production and custom content.

Why you need ENVI:

- Normalize consumption against production
- Display external webpage content inside ENVI
- Dashboard URL now configurable
- Customized green tips per dashboard



Select additional unit types including compressed air, coal, biomass, petroleum and custom units



Add external links within ENVI to navigate to a website, html page or image to promote corporate activity



Additional features/changes

In addition to the new Express and ENVI functionality, the following updates and changes will be made in the 2017.2 release.

- **Contracts**
 - Ability to calculate and apply fixed charges for non-calendar month tariffs
 - Additional search options added
 - New user interface for contracts wizard
 - Attachments can now be added to contract and contract history
- **Reports**
 - New user interface for report wizard
- **High Level Analysis**
 - Select no path when you have access to the entire tree structure
- **Facilities Dashboard**
 - Can now be assigned to a category, making it easier to organize dashboards in the Express Interface
- **Image Maps**
 - Configuration is now relocated under the Configuration menu
- **Tags**
 - New Auto-Tags for all fuel types, main meters and pro-rata
- **Project Tracking**
 - Breakdown a policy's expected savings to site or building level
 - Project Tracking Summary Report

*Preliminary information only – subject to change.